

GLASS CRUSHER

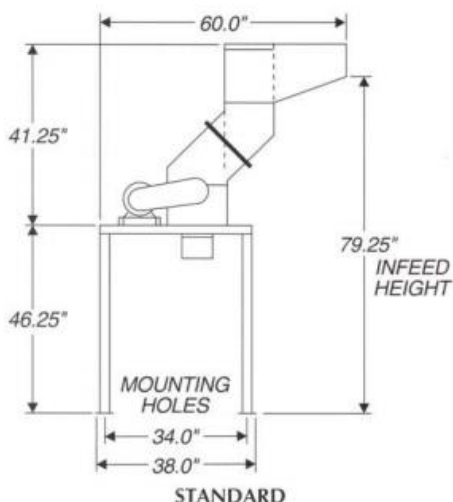
MODEL 318

The Medium to High Volume Glass Crushing Solution – Beverage Distributors, Recycling Operations, Cruise Ships, Restaurants, Hotels & Universities

Designed for stand alone use or in conjunction with a conveyor and can be mounted below chutes in MRF applications. A small, compact unit that will hold up to most anything you can throw at it. Volume reductions up to 80%.

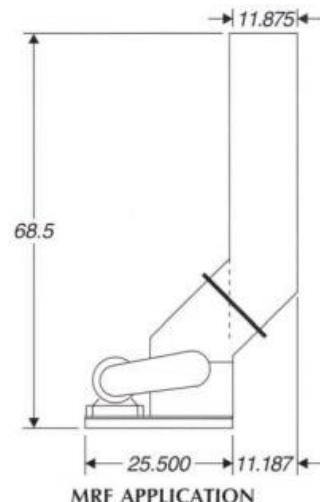
STANDARD PRODUCT FEATURES

- Rated capacity of 2 to 3 tons per hour
- Crushes up to and including one gallon bottles
- Processes full or partially filled containers
- Factory-direct parts and service



OVERALL DIMENSIONS

Length: 60"
Width: 38"
Height: 87½"
Weight: 470 lbs.
(No skid)



SPECIFICATIONS

Constructed of ¼" steel plate	Replaceable urethane discharge shroud
Hardened replaceable crushing bars	Casters optional
Hardened replaceable breaker plates	75 lbs. cu. Ft. standard crushed particle size (smaller or larger particle size available upon request)
1 HP Motor	95-100 DBA noise level while crushing