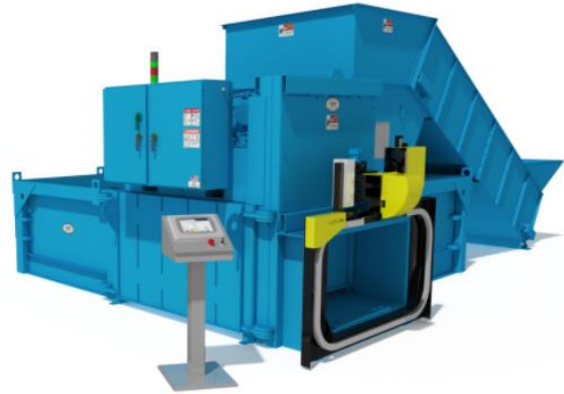


HORIZONTAL BALER – MODEL H2R

The H2R Auto Tie is the flagship of the range of horizontal balers. This two ram, auto tie baler is designed for Material Recovery Facilities, Recycling Centers, and Distribution Centers that need to process high volumes of recyclables daily. The auto tie feature reduces labor costs and increases throughput.

The H2R Auto Tie is designed to minimize the labor associated with routine bale tie-off. It can process a variety of materials and produces a standard mill-sized 60" bale. Full penetration ensures high-density bales, while the auto-tie feature ensures efficient operation.



FEATURES

- **Touch Screen Controls** – Touch screen controls integrate baler controls and wire tie system controls into one single, easy to use system. Touch screen controls feature a dashboard that displays real time system status including system pressure, presshead position, conveyor speed, oil temperature, and other critical system metrics.
- **Accent 470 Wire Tie System** – The Accent 470 system is the most advanced wire tie system available today. It requires no mechanical or hydraulic adjustments for increased simplicity and reliability.
- **9" High Performance Cylinder** – Massive 9" main cylinder is made in the USA and produces over 180,000 psi normal operating force at the presshead face.
- **Guillotine Bale Separator** – Bale separator closes off chamber to ensure tight, high density bales.
- **Externally Adjustable, Serrated Shear Blade** – Shear blade can be adjusted from the side of the machine without the need to get into the charge chamber or behind the presshead.
- Conforms to all current ANSI Z 245.5 safety standards

SPECIFICATIONS

- **Nominal Bale Size** – 48" L x 60" W x 30" H
- **Clear Top Opening (W x L)** – 60" x 38 5/8"
- **Bale Weight Up to (OCC)** – 1,400 lbs
- **Throughput (OCC)** – 3.5 bales/hr
- **Cycle Time (No Load)** – 26 seconds
- **Platen Force** – 181,217 lbs normal | 190,755 lbs max
- **Platen Face Pressure** – 101 psi normal | 106 psi max
- **Motor (3 Phase)** – 25 hp
- **Pump Capacity** – 55 gpm
- **Hydraulic Reservoir Capacity** – 150 gallons
- **Hydraulic Cylinder Bore Diameter** – 9"
- **Hydraulic Cylinder Stroke** – 84"
- **Hydraulic Rod Diameter** – 7"
- **Operating Pressure** – 2,850 psi normal | 3,000 psi max

H2R DIMENSIONS

	Overall Height w/ Standard Hopper	Overall Height w/ Conveyor & Hopper	Overall Width	Overall Length	Overall Length w/ Conveyor	Unit Weight
H2R-60	7' 5"	9' 8 1/2"	15' 1 3/4"	18' 5"	25' 10 1/4"	30,000 lbs

Due to continual product improvement Compactors Inc. reserves the right to change specifications without notice. The information and pictures used in the document are for illustrative purposes only.