

REM® OSCAR CHAIN BELT SERIES CONVEYORS

The OSCAR Chain Belt Conveyors are our tough line of heavy-duty feed conveyors. For baler feed applications, MRF feed conveyors, and other heavy applications, The Model Oscar Chain Belt Conveyors are the ideal choice. The Chain Belt conveyors feature three different configurations. Depending upon your application and budget, we have the OSCAR-LT, OSCAR-HD, and OSCAR-EXT. Built for years of service and low maintenance, these conveyors feature time proven, field tested designs that will last and last.



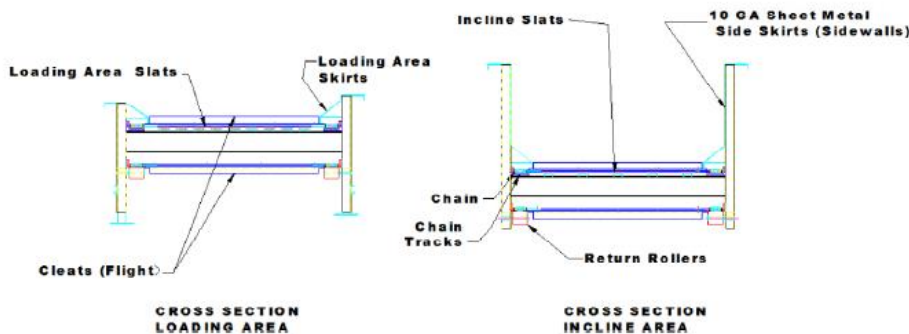
Each Oscar Chain Belt conveyor is assembled and pre-tested. Featuring flanged bolt-together sections for easy assembly and shipped with as much pre-assembled as possible to minimize field installation time.

FEATURES

- **Belt Widths:** 24" through 96" in 6" increments
- **Chain Glides:** 3/8" to 5/8" UHMW wear liners - The HD & EXT series pit section is double slatted 3" channel to first incline section
- **Belt Speeds:** 30 FPM standard up to 80 FPM
- **Motor:** 230/460 volt, 3 phase TEFC
- **Bearings:** HD & EXT Series Heavy Duty Spherical Roller 4 bolt
- **Sprockets:** Flame Cut built out of 1045HC Steel
- **Safety:** E-Stop Pull Cables on both sides of the conveyor
- **Pit Section Skirt:** 3/16" or 1/4" steel plate
- **Incline Section:** LT – 12 gauge HD - 10 gauge steel
- **Paint:** Standard blue waterborne enamel with OSHA Yellow Guards. Custom colors available at additional cost

	OSCAR-LT	OSCAR-HD	OSCAR-EXT
Chain	WR82 3.075" pitch	WH111 4" pitch	W150HD 6.050" pitch
Belt	220# 2 ply Rubber	330# 3 ply Rubber	330# 3 ply Rubber
Cleats	Size & spacing based on specific application		

- **Guards:** Expanded metal screen for increased visibility and safety
- **Frames:** H type frames with support ribs and channels 36" or 48" on centers
- **Supports:** Adjustable legs in pit section and adjustable heavy-duty square tubing in head section
- **Incline:** From Zero to Forty-Five Degrees



Due to continual product improvement Compactors Inc. reserves the right to change specifications without notice. The information and pictures used in the document are for illustrative purposes only.