

REM® OSCAR STEEL PAN SERIES CONVEYORS

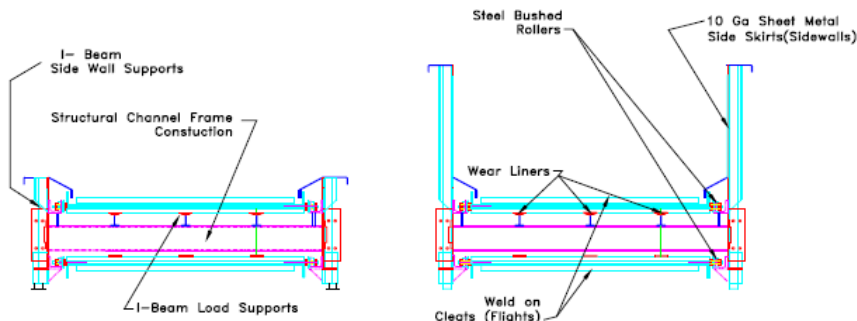
The Model OSCAR Steel Belt Hinge Pan Conveyors are our tough line of Heavy-Duty Feed Conveyors. For heavy baler feed applications, scrap feed conveyors and transfer station conveyors, the model Oscar Steel Pan Conveyors are the ideal choice. The Steel Pan conveyors feature three different configurations. Depending upon your application and budget, we have the OSCAR-SHP (Hinge Pan), OSCAR- SZP (Z-Pan) and OSCAR- SBP (Beaded Apron Pan). Built for years of service and low maintenance, these conveyors feature time proven, field tested designs that will last and last.



Each Hinge Pan conveyor is assembled and pre-tested. They feature flanged bolt together sections for easy assembly and shipped with as much pre-assembly as possible to minimize field installation time to save you time and money.

FEATURES

- **Belt:** Piano Hinge Pan, Beaded Apron Pan and Z-pan. Available in 4", 6" or 9" pitch, 1/4" or 1/2" pan and 2"-5" flanged wheels.
- **Belt Widths:** 24" through 96"
- **Wear Liners:** 3/4" UHMW Plastic or AR Steel
- **Impact Beams:** 4" I-Beam 7.7 Lbs. Per foot
- **Motor:** 230/460 volt, 3 phase TEFC
- **Belt Speeds:** 30 FPM standard up to 50 FPM
- **Gear Reducer:** Heavy Duty Helical Gear
- **Bearings:** Heavy Duty Spherical Roller 4 bolt Expansion and Non-Expansion
- **Sprockets:** Flame Hardened Constructed of 1045HC Steel
- **Pit Section Skirting:** 1/4" to 3/4" steel plate
- **Incline Section Skirting:** 10 gauge steel up to 3/8" thick plate
- **Guards:** Expanded metal screen for increased visibility and safety
- **Frames:** Heavy duty structural steel H type frames with support ribs and channels
- **Supports:** Adjustable legs in pit section and adjustable heavy duty square tubing in head section
- **Incline Angle:** From Zero to Forty-Five Degrees



Due to continual product improvement Compactors Inc. reserves the right to change specifications without notice. The information and pictures used in the document are for illustrative purposes only.