

CHUTE FED APARTMENT COMPACTOR KOMAR DP500

Built to handle volume. Designed to control costs. The Komar DP500 Chute Fed Apartment Compactor is designed to streamline waste handling in apartment buildings and multi family properties. By compacting waste at the source, the DP500 dramatically reduces haul frequency, lowers operating costs, and improves overall site efficiency.

From new construction to retrofit applications, the DP500 integrates seamlessly with existing trash chute systems.

- Reduce hauling costs through higher compaction ratios
- Improves cleanliness and reduces odor in trash rooms
- Supports resident satisfaction with reliable chute-fed operation
- Compact footprint designed for tight trash rooms
- Built for long term durability with minimal maintenance



STANDARD FEATURES

- Remote Power Unit
- "UL" Labeled Control Panel
- 208/240/480 Volt 5HP Motor
- Photo Electric Eye With Time Delay
- Automatic Cycle
- Mushroom Stop Button
- On/Off Key Switch
- 2 Interlocked Side Access Doors with Automatic Shut-Off
- Night Shut Down
- Programmable Logic Control (PLC)
- ANSI Compliant
- Ratchet Turnbuckle Hook-Up
- Soft Shift Single Solenoid Valve
- Replaceable Low Friction, Noise Reducing Wear Pads
- On Light
- Container Full Light
- Oil Pressure Gauge
- Excessive Run Timer
- Maintenance Reminder Indicator
- 208/240/480 Control Panel
- Access Door on Both Sides
- Adjustable/Interchangeable Left/Right Side Container Hookup

ROI & COST SAVINGS

- Fewer hauls per month
- Lower monthly waste collection bills
- Increased container efficiency
- Ideal for predictable, consistent multi family waste streams

Due to continual product improvement Compactors Inc. reserves the right to change specifications without notice. The information and pictures used in the document are for illustrative purposes only.

CHUTE FED APARTMENT COMPACTOR

KOMAR DP500

HYDRAULICS

Number of Cylinders	2
Bore/Rod	2.5"/1.375
Cylinder Stroke	20"
Pump	6.0 GPM
Valve	Single Solenoid Soft Shift
Oil Reservoir	14 GAL
Normal Cycle Time	Adjustable 13.7-60 Seconds
Normal Pressure	Adjustable 1350-1650 PSI
Maximum Pressure	1950 PSI
Normal Force	13,900 LBS/23.2 PSI

RAM

Top Plates	1/4"
Sides	1/4"
Floor	3/8"
Face Plate	3/8"
Steel Wiper	3" x 1/4"
Replaceable Wear Pads	YES
Ram Penetration	4.25"

COMPACTOR FRAME

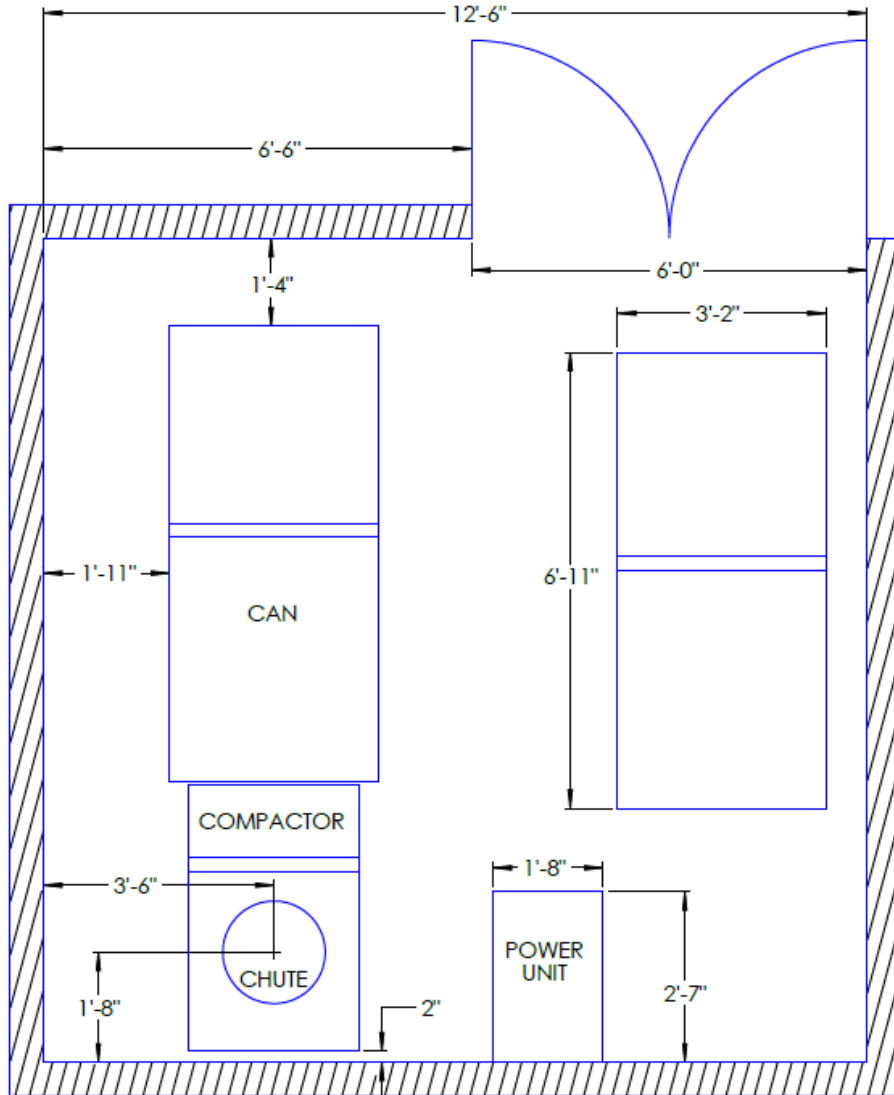
WASTEC Rated Size	0.34
Hopper Top Opening	38" x 30"
Capacity Per Hour	77 cubic yards
Floor (1/4"+ 1/4" Wear Plate)	1/2"
Breaker Bar	4" x 3" x 1/2"
Side Plates	1/4"
Hopper Sides & Front	11 Gallons
Hopper Impact Plate	1/4"
Ratchet Turnbuckle Cap.	38,000 lbs
Weight w/o Power Unit	1,600 lbs
Machine Dimensions	48"L x 40"W x 65" H

ELECTRICAL

Motor (TEFC)	5HP
"UL" Labeled	YES
Power	208/240/480 3 Phase
NEMA Type Fuse	YES
Photo Electric Eye	YES

Due to continual product improvement Compactors Inc. reserves the right to change specifications without notice. The information and pictures used in the document are for illustrative purposes only.





TYPICAL COMPACTOR ROOM